

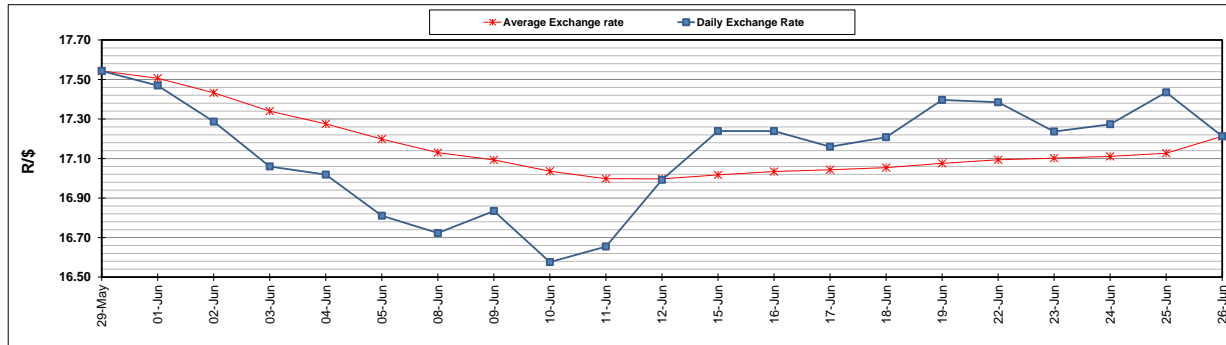
	PETROL 95 ULP	PETROL 93 ULP & LRP	DIESEL 0.05%	DIESEL 0.005%	ILL. PAR.
GAUTENG PUMP PRICE (SA c/l) AS FROM 01/07/2020	1,512.000	1,483.000	-	-	-
WHOLESALE PRICE (SA c/l) AS FROM 01/07/2020	-	-	1,303.560	1,307.960	703.828
SINGLE NATIONAL MAXIMUM RETAIL PRICE	-	-	-	-	882.000
BASIC FUEL PRICE - 26/06/2020 (SA c/l)	555.179	540.916	574.350	577.577	509.969
PRESS RELEASE CONTRIBUTION TO BFP 26/06/2020 - 26/06/2020 (SA c/l)	392.770	382.770	379.630	388.030	285.128
UNIT OVER/(UNDER) RECOVERY - 26/06/2020 (SA c/l)	(162.409)	(158.146)	(194.720)	(189.547)	(224.841)
AVERAGE BASIC FUEL PRICE 26/06/2020 - 26/06/2020	555.179	540.916	574.350	577.577	509.969
AVERAGE UNIT OVER/(UNDER) RECOVERY 26/06/2020 - 26/06/2020	(162.409)	(158.146)	(194.720)	(189.547)	(224.841)

### ANALYSIS MOVEMENT OF AVERAGE OVER/(UNDER) RECOVERY

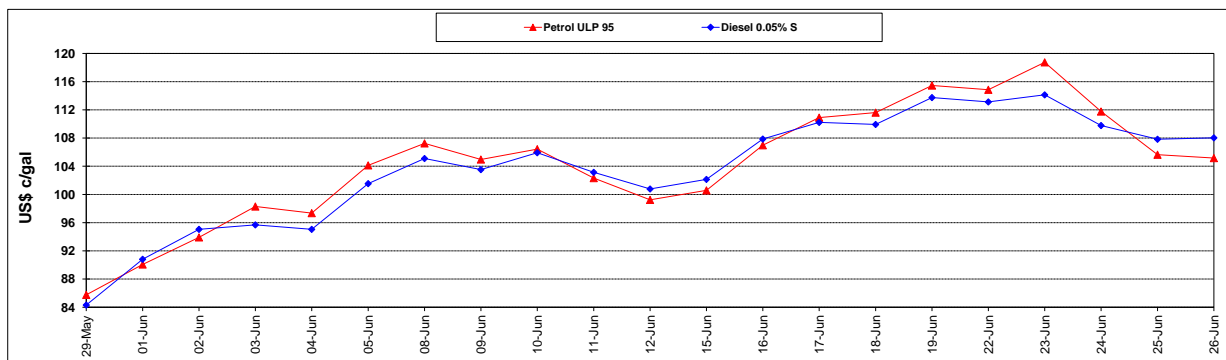
	PETROL 95	PETROL 93	DIESEL 0.05%	DIESEL 0.005%	ILL. PAR.
- MOVEMENT IN INTERNATIONAL PRODUCT PRICES	(159.654)	(155.462)	(191.870)	(186.681)	(222.311)
- MOVEMENT IN EXCHANGE RATE	(2.755)	(2.684)	(2.850)	(2.866)	(2.530)
AVERAGE UNIT OVER/(UNDER) RECOVERY 26/06/2020 - 26/06/2020	(162.409)	(158.146)	(194.720)	(189.547)	(224.841)

### R/\$ EXCHANGE RATE - (R/\$17.2125 - 26/06/2020)

#### EXCHANGE RATE USED IN BASIC FUEL PRICE



#### INTERNATIONAL PRODUCT PRICES OF BASKET USED IN BASIC FUEL PRICE



#### BASIC FUEL PRICE IN SA CENTS PER LITRE

